

2014 HIV Surveillance Data



In the US

>1 MILL |  ARE LIVING WITH HIV IN THE U.S.

1 IN 8 LIVING WITH HIV



ARE **UNAWARE** OF THEIR INFECTION

In Texas

- As of 2014, over 80,000 persons were known to be living with HIV in Texas.
- In 2014, a total of 4,405 cases of HIV were newly diagnosed in Texas.

Disparities

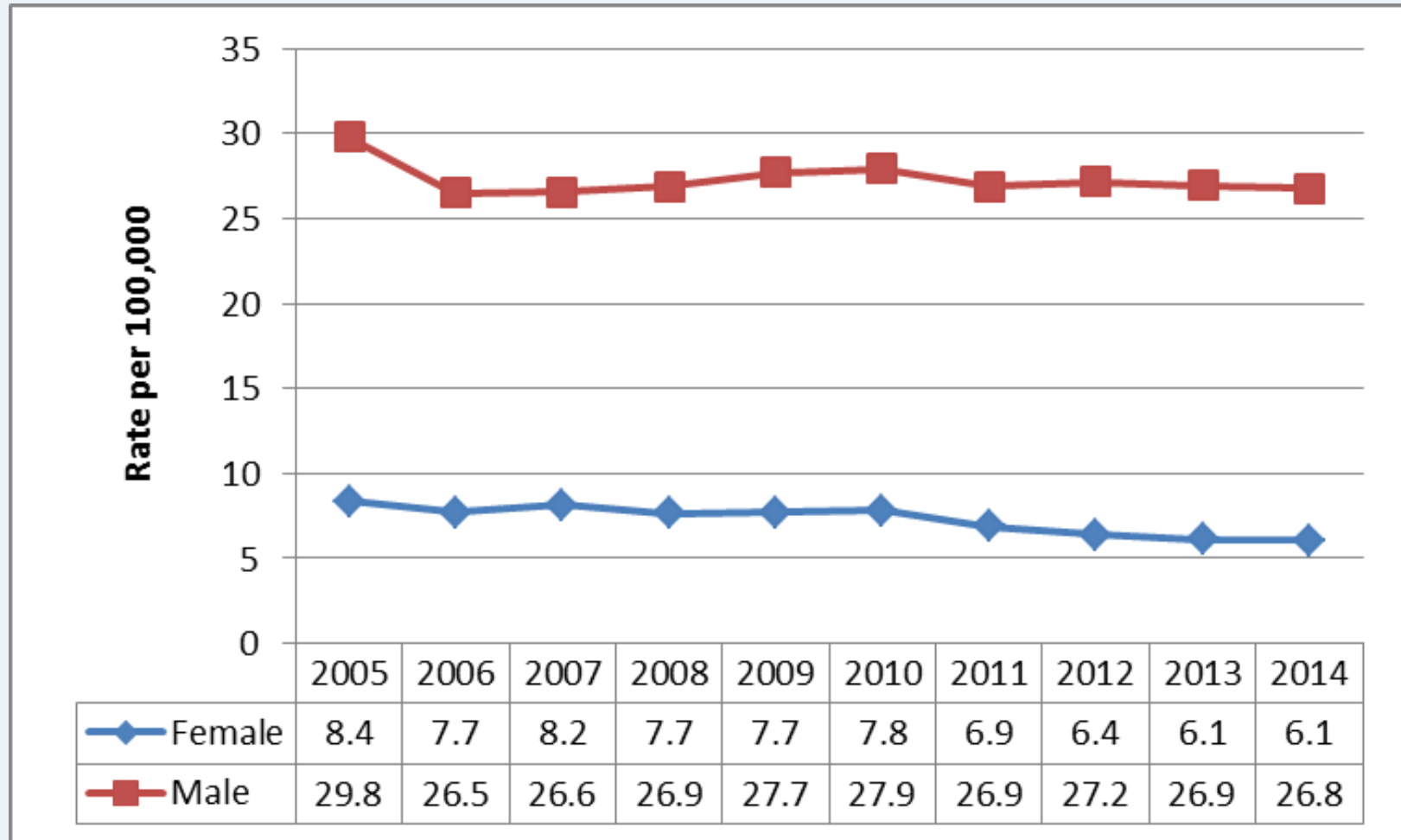
- Gay and bisexual men continue to be most affected by the HIV epidemic in the U.S.
- At current rates:
 - 1 in 6 MSM will be diagnosed with HIV in their lifetime,
 - 1 in 2 black MSM,
 - 1 in 4 Latino MSM,
 - 1 in 11 white MSM (Center for Disease Control and Prevention 2016)

HIV Diagnoses Rates by Sex, Race/Ethnicity, and Age Group, 2004-2014

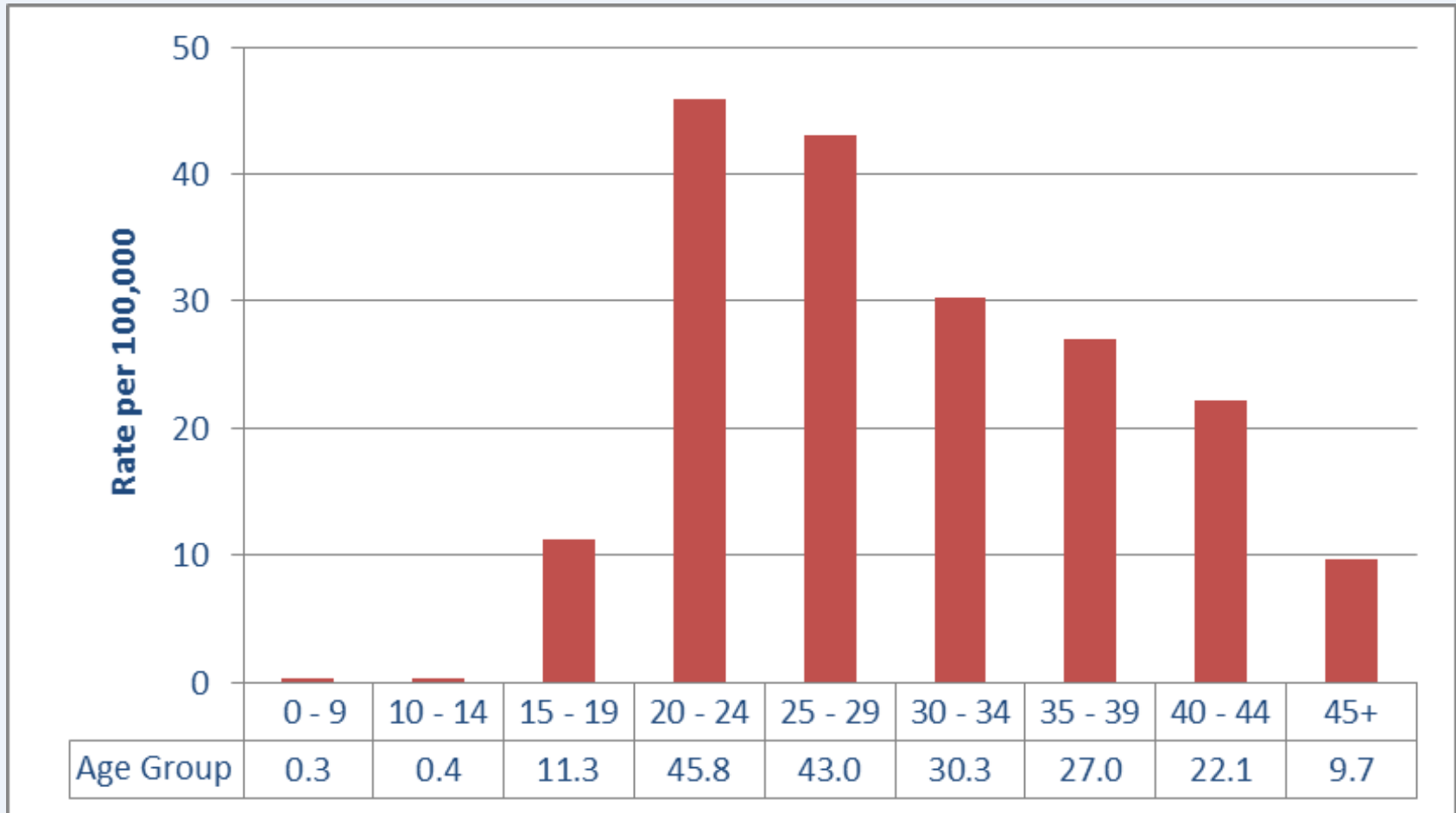
	2005		2006		2007		2008		2009		2010		2011		2012		2013		2014	
	Cases	Rate*	Cases	Rate*	Cases	Rate*	Cases	Rate*	Cases	Rate*	Cases	Rate*	Cases	Rate*	Cases	Rate*	Cases	Rate*	Cases	Rate*
Sex																				
Female	962	8.4	905	7.7	980	8.2	939	8	965	8	992	8	888	7	840	6	816	6	823	6
Male	3,368	29.8	3,071	26.5	3,139	26.6	3,239	27	3,405	28	3,485	28	3,422	27	3,520	27	3,541	27	3,582	27
Total	4,330		3,976		4,119		4,178		4,370		4,477		4,310		4,360		4,357		4,405	
Race																				
White	1,190	10.6	995	8.8	961	8.4	976	9	944	8	923	8	879	8	909	8	935	8	919	8
Black	1,598	60.7	1,604	57.9	1,616	57.4	1,696	59	1,735	59	1,764	59	1,595	52	1,595	51	1,634	51	1,649	51
Hispanic	1,366	17.1	1,233	14.8	1,347	15.6	1,333	15	1,475	16	1,555	16	1,585	16	1,638	16	1,581	16	1,650	16
Other	36	4.1	35	3.8	42	4.3	47	5	44	4	58	5	73	6	64	5	78	6	83	6
Unknown	140	0.0	109	0.0	153	0.0	126	0	172	0	177	0	178	0	154	0	129	0	104	0
Age Group																				
0 - 9	12	0.3	12	0.3	23	0.6	17	0.45	19	0.5	14	0.36	24	0.62	16	0.41	14	0.36	12	0.3
10 - 14	5	0.3	8	0.5	5	0.3	2	0.11	6	0.32	5	0.27	5	0.26	9	0.46	6	0.31	7	0.35
15 - 19	143	8.2	172	9.6	186	10.2	197	10.67	254	13.55	252	13.38	230	12.23	242	12.86	206	10.89	215	11.29
20 - 24	491	28.1	495	28.1	563	31.9	664	37.35	724	40.27	797	43.86	800	42.64	812	41.94	823	41.71	917	45.84
25 - 29	662	40.3	618	36.3	657	37.4	675	37.29	691	37.52	676	36.48	692	36.85	734	38.6	810	42.13	847	43.04
30 - 34	665	40.2	580	35.0	571	34.2	577	34.23	628	36.42	644	36.58	564	31	632	33.8	639	33.32	594	30.34
35 - 39	735	45.3	602	36.0	619	36.0	592	33.86	549	31.13	532	30.17	494	28.22	466	26.5	450	25.34	488	26.96
40 - 44	649	37.9	583	34.2	554	32.8	512	30.53	518	30.86	509	30.03	464	26.53	458	25.62	417	23.04	404	22.14
45+	968	13.1	906	11.8	941	11.8	942	11.49	981	11.61	1048	12.14	1037	11.65	991	10.88	992	10.65	921	9.66
Unknown	0	0.0	0	0.0	0	0.0	0	0	0	0	0	0	0	0	0	0	0	0	0	0
Total	4330	19.0	3976	17.0	4119	17.3	4178	17.19	4370	17.62	4477	17.8	4310	16.8	4360	16.71	4357	16.44	4405	16.34

* Rates represent cases per 100,000 population.

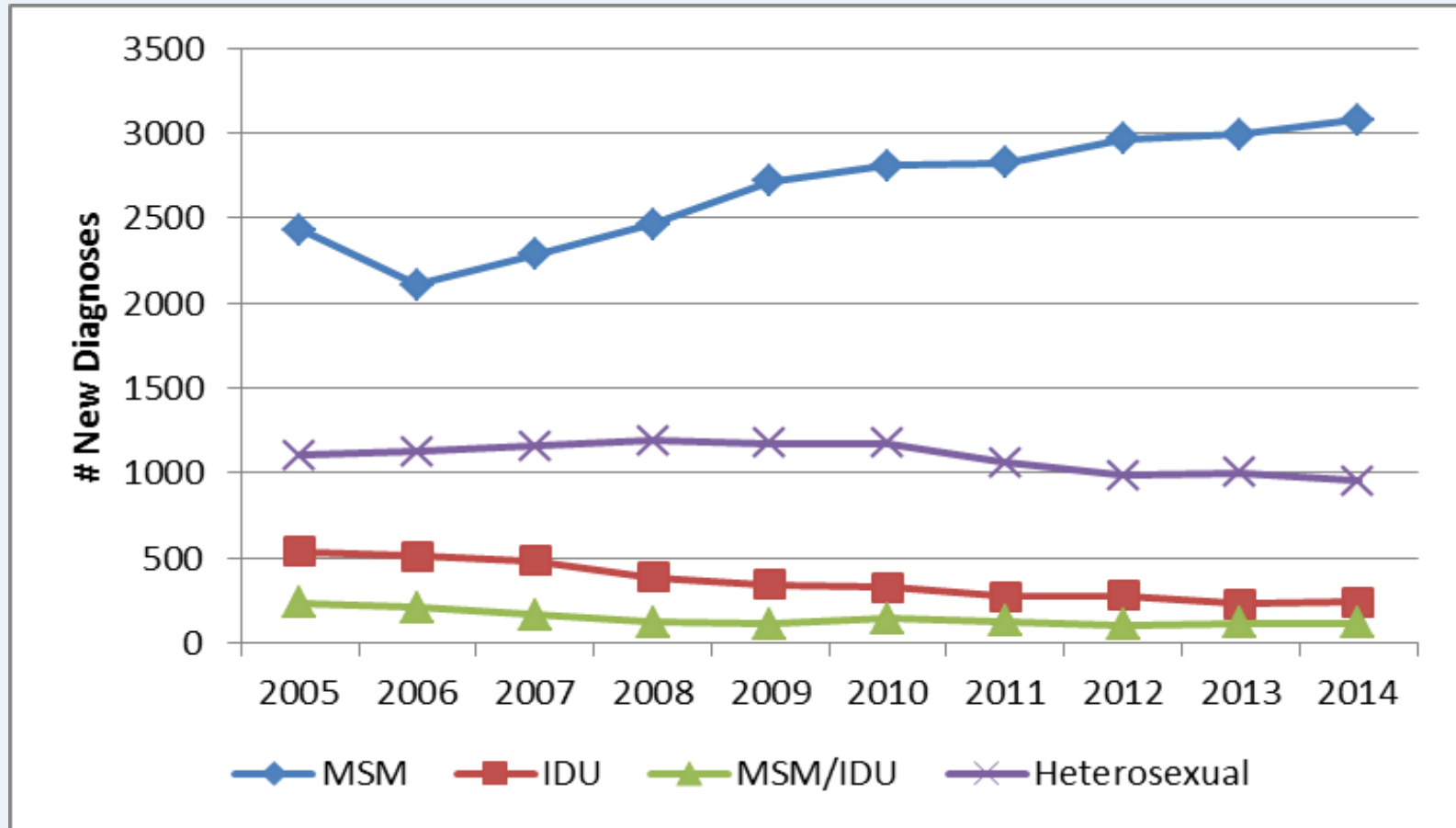
HIV Diagnosis Rates by Sex and Year of Diagnosis 2005-2014



HIV Diagnosis Rates by Age at Diagnosis 2014

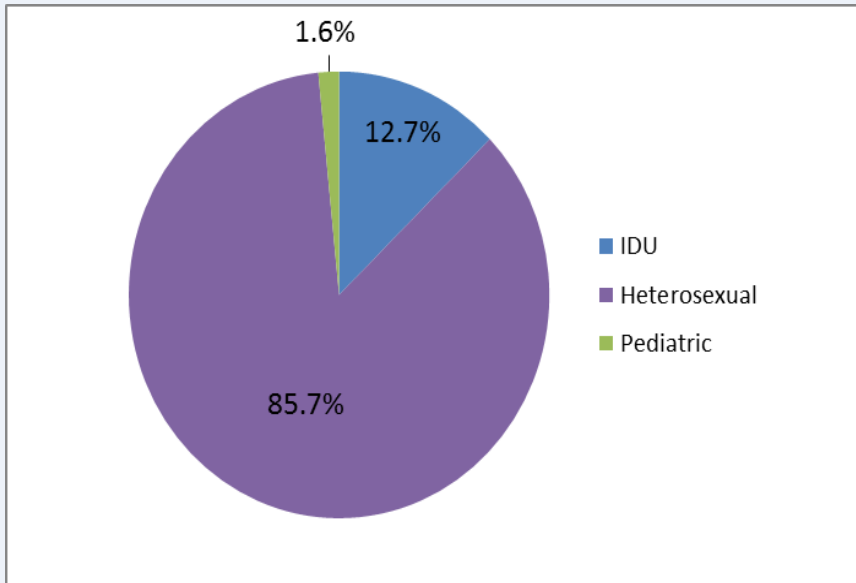


New HIV Diagnoses by Mode of Transmission 2005-2014

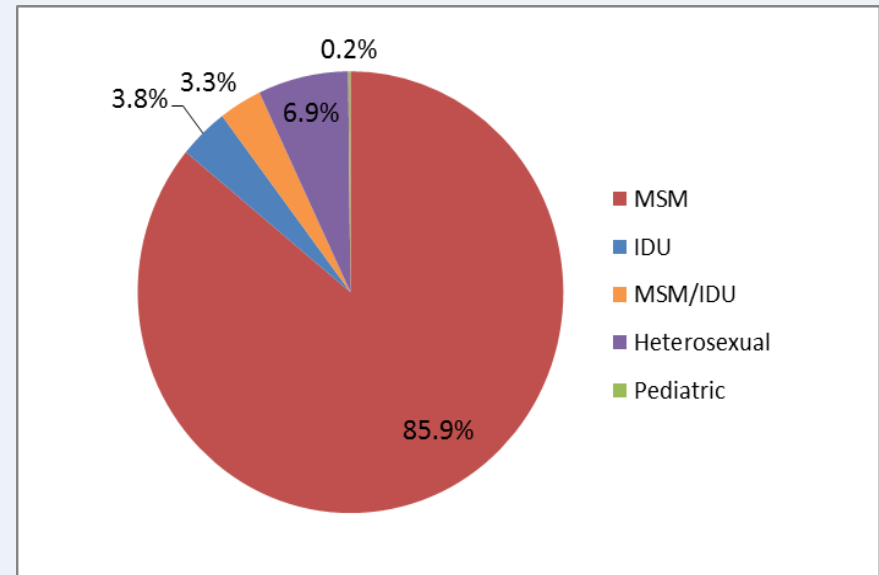


New HIV Diagnoses by Mode of Transmission and Sex, 2014

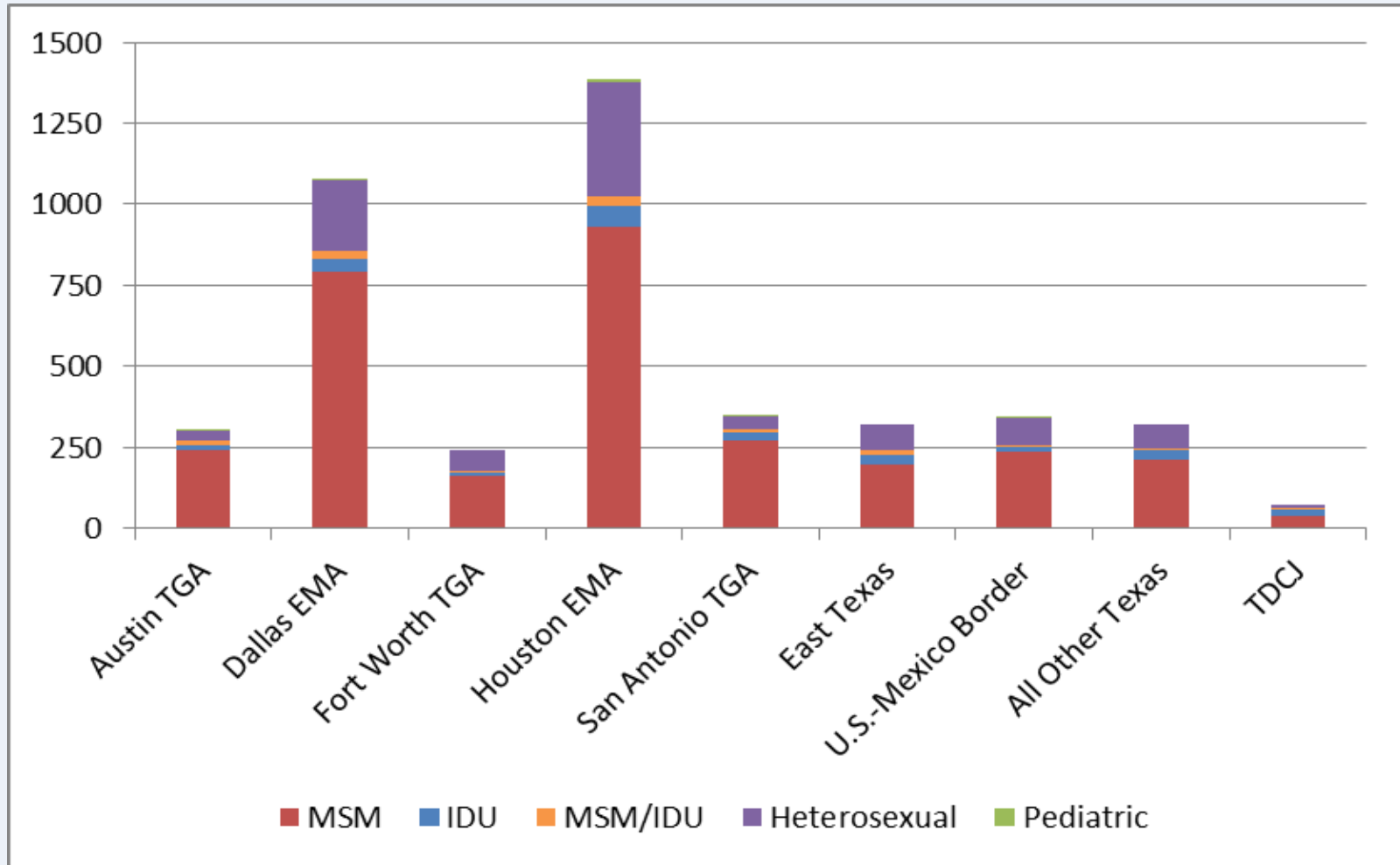
Females



Males



New Diagnoses Mode of Transmission by EMA/TGA*, 2014



People Living With HIV(PLWH) in Texas

PLWH by Sex, Race/Ethnicity, and Age Group, 2014

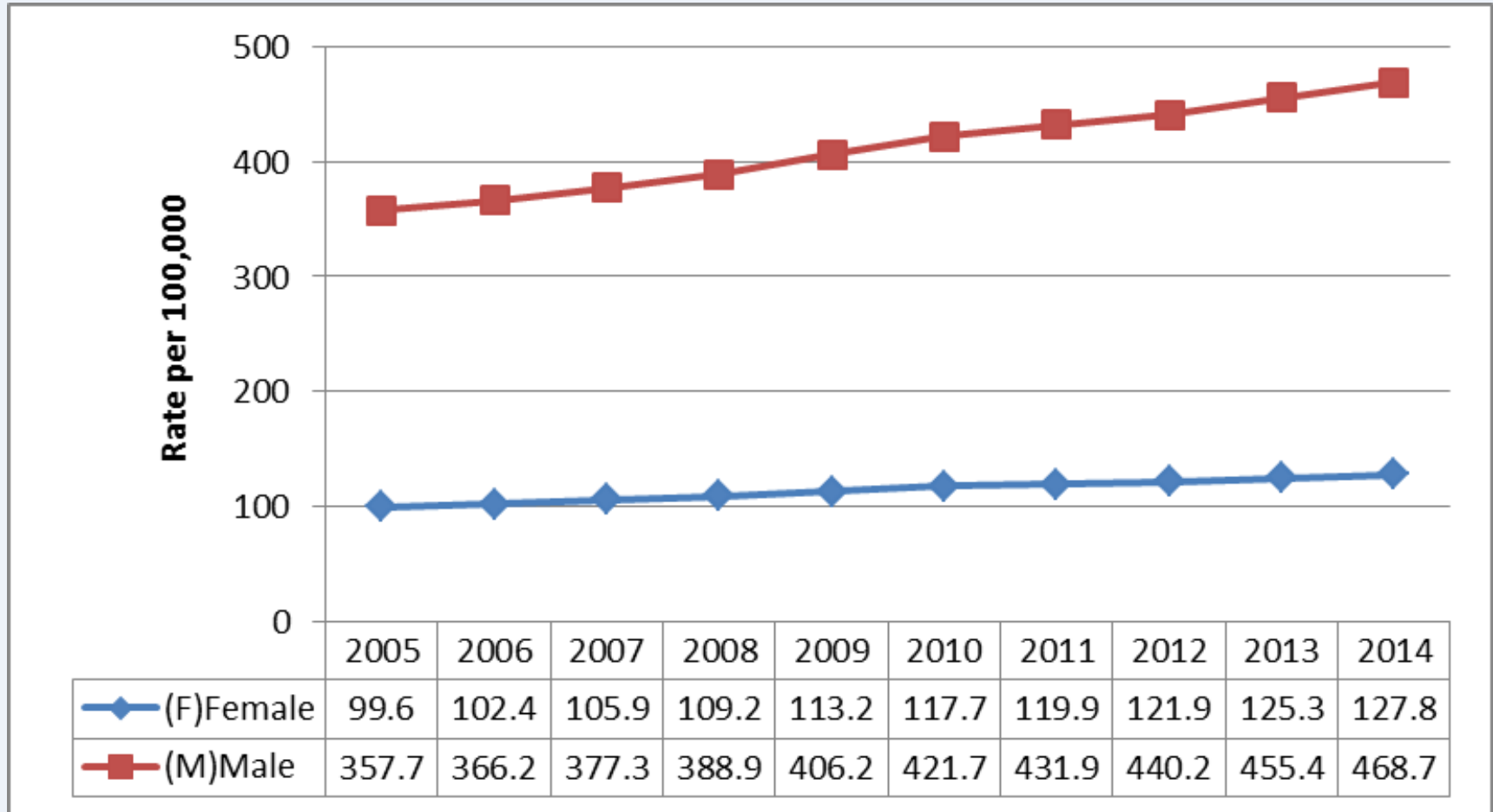
Through December 31, 2014		
	People Living with HIV	
	Cases	Rate*
Sex		
Male	62,723	468.7
Female	17,350	127.8
Race		
White	22,184	185.8
Black	29,895	920.1
Hispanic	24,607	236.4
Other	836	61.7
Unknown	2,551	
Age Group**		
0 - 9	137	3.5
10 - 14	153	7.7
15 - 19	513	26.9
20 - 24	3,470	173.5
25 - 29	6,804	345.7
30 - 34	8,113	414.4
35 - 39	9,173	506.7
40 - 44	10,590	580.4
45+	41,120	431.3
Total	80,073	297.0

* Rates represent cases per 100,000 population.

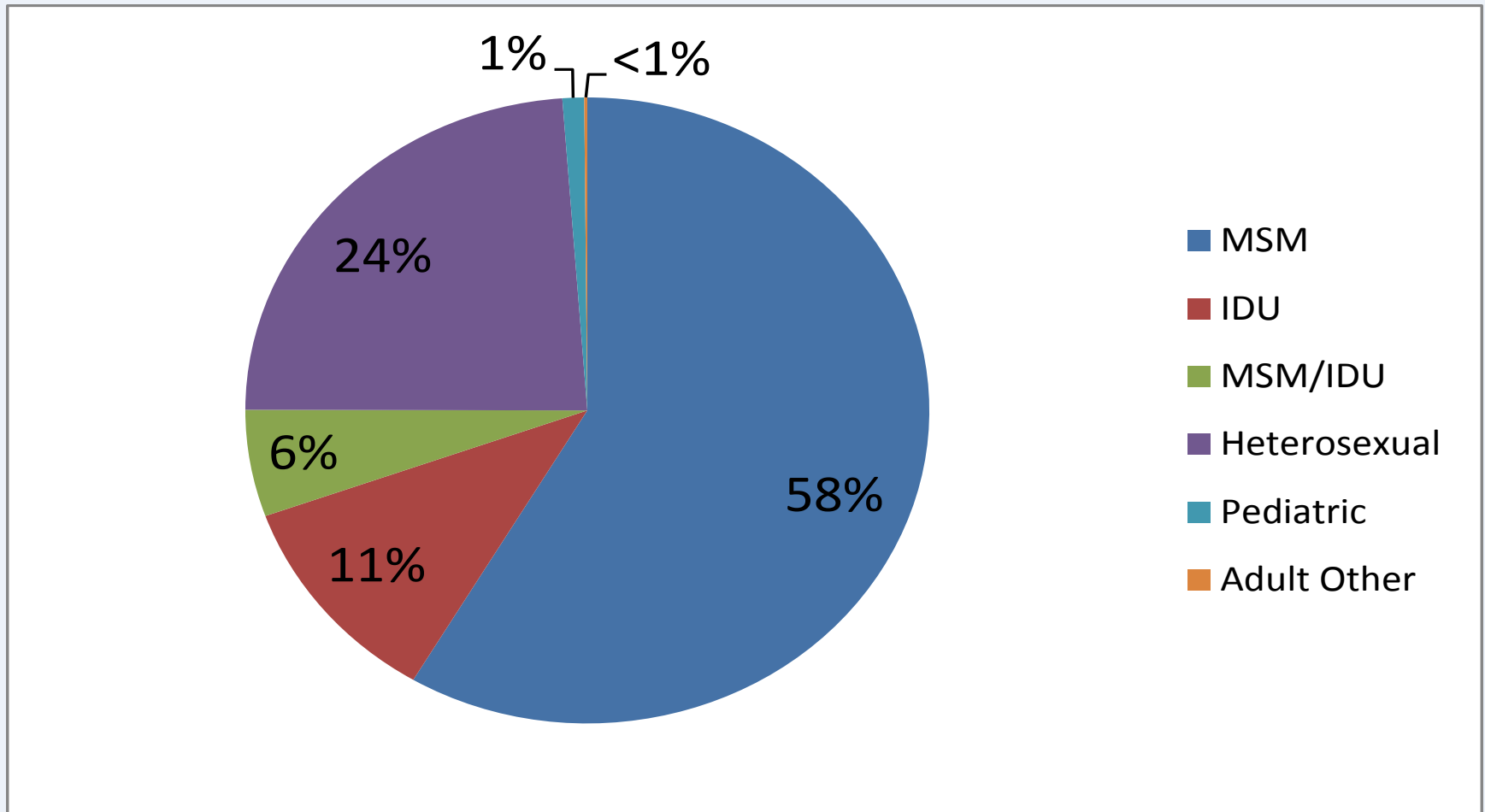
** Age as of December 31, 2014



Prevalence Rate of PLWH by Gender, 2005-2014



PLWH by Mode of Transmission, 2014



Regional Data

New HIV and AIDS Diagnoses and Rates by Public Health Region, 2014

Public Health Region	HIV Infection*		People Living with HIV**		Cumulative HIV Diagnoses**
	Cases	Rate †	Cases	Rate †	Cases
Region 1	61	7.1	996	115.7	1,750
Region 2	22	4.0	558	101.5	947
Region 3	1338	18.4	24824	341.6	38,622
Region 4	129	11.4	1868	165.7	2,841
Region 5	95	12.3	1679	218.0	2,845
Region 6	1487	22.3	26695	400.9	48,160
Region 7	405	12.6	7370	228.9	11,216
Region 8	390	13.9	6450	229.8	9,994
Region 9	38	6.1	752	120.6	1,092
Region 10	110	12.8	2050	239.1	2,928
Region 11	257	11.6	3309	149.3	4,981
TDCJ ‡	73	.	3522	.	4,141
State Total	4,405	16.3	80,073	297.0	129,517
* 2014 diagnoses.			† Rates represent cases per 100,000 population.		
** Through December 31, 2014			‡ Texas Department of Criminal Justice.		

25 Counties with the Highest Case Counts, 2014

Rank	HIV Diagnoses*		People Living with HIV**	
	County	Number	County	Number
1	HARRIS CO.	12,89	HARRIS CO.	22,924
2	DALLAS CO.	887	DALLAS CO.	16,146
3	BEXAR CO.	329	BEXAR CO.	5,477
4	TRAVIS CO.	244	TARRANT CO.	4,807
5	TARRANT CO.	230	TRAVIS CO.	4,401
6	EL PASO CO.	109	TDCJ	3,522
7	COLLIN CO.	89	EL PASO CO.	2,030
8	HIDALGO CO.	80	COLLIN CO.	1,516
9	TDCJ	73	FORT BEND CO.	1,195
10	CAMERON CO.	72	HIDALGO CO.	1,159
11	DENTON CO.	62	DENTON CO.	1,063
12	FORT BEND CO.	55	GALVESTON CO.	882
13	JEFFERSON CO.	53	JEFFERSON CO.	879
14	GALVESTON CO.	47	CAMERON CO.	766
15	LUBBOCK CO.	40	MONTGOMERY CO.	650
16	BELL CO.	37	NUECES CO.	608
17	WEBB CO.	36	BELL CO.	604
18	NUECES CO.	35	WILLIAMSON CO.	590
19	MONTGOMERY CO.	30	BRAZORIA CO.	505
20	WILLIAMSON CO.	29	LUBBOCK CO.	415
21	GREGG CO.	27	GREGG CO.	410
22	BRAZORIA CO.	27	MCLENNAN CO.	408
23	BRAZOS CO.	23	WEBB CO.	404
24	SMITH CO.	22	SMITH CO.	397
25	BOWIE CO.	21	BRAZOS CO.	339

* 2014 diagnoses.
** Through December 31, 2014

25 Counties with the Highest Case Rates*, 2014

Rank	HIV Infection*		People Living with HIV**	
	County	Rate per 100,000	County	Rate per 100,000
1	Frio	59.4	Dallas	641.1
2	Dallas	35.2	Reeves	599.3
3	Harris	29.0	Garza	559.4
4	Bowie	22.5	Harris	516.1
5	Gregg	21.9	Concho	493.8
6	Travis	21.2	Willacy	461.1
7	Jefferson	21.0	Frio	442.5
8	Anderson	19.1	Travis	382.3
9	Bexar	17.7	Houston	373.8
10	Cameron	17.1	Jefferson	348.5
11	Galveston	15.0	Gregg	332.8
12	Lubbock	13.6	Howard	297.4
13	Webb	13.5	Bexar	295.1
14	El Paso	13.1	Galveston	280.7
15	Tarrant	11.8	Tarrant	247.1
16	Kaufman	11.7	El Paso	243.6
17	Angelina	11.4	Marion	236.5
18	Bell	11.2	Bowie	220.9
19	Brazos	11.0	Trinity	217.9
20	Collin	10.1	Jones	215.7
21	Smith	10.1	Haskell	208.0
22	Nueces	9.8	Potter	206.4
23	Wichita	9.8	Bastrop	199.8
24	Hidalgo	9.6	Polk	199.7
25	Hays	9.2	Brooks	194.6

* 2014 diagnoses.
** Through December 31, 2014

*Includes only counties with >10 HIV diagnoses

** Includes only counties with >10 PLWH in 2014

El Paso County

New dx 2010-2014: El Paso County

Data source: TDSHS, 2015. Charts & tables made for HIV Community Mobilization Team.

(sex at birth)	2010	2011	2012	2013	2014	Total
Female	9	12	12	20	10	63
Male	104	95	127	97	99	522
Total	113	107	139	117	109	585

Women represented:

8% of new diagnoses in 2010

11% in 2011

9% in 2012

17% in 2013

9% in 2014

Men

92%

89%

91%

83%

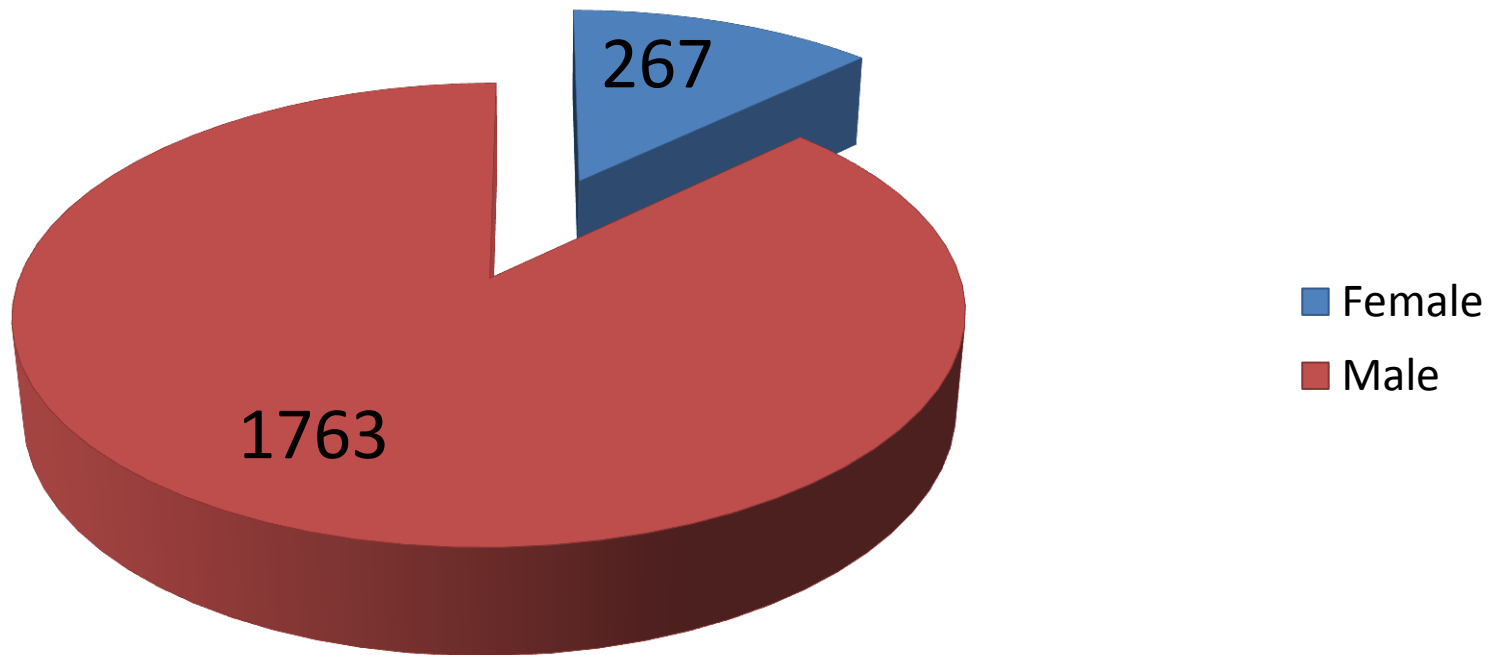
91%

New dx by age group in El Paso County

(age group)	2010	2011	2012	2013	2014	Total
2-12	0	0	0	1	0	1
13-24	27	27	45	27	24	150
25-34	38	33	48	41	44	204
35-44	18	23	23	15	19	98
45-54	20	12	17	17	22	88
55+	10	12	6	16	N/A	44
Total	113	107	139	117	109	585

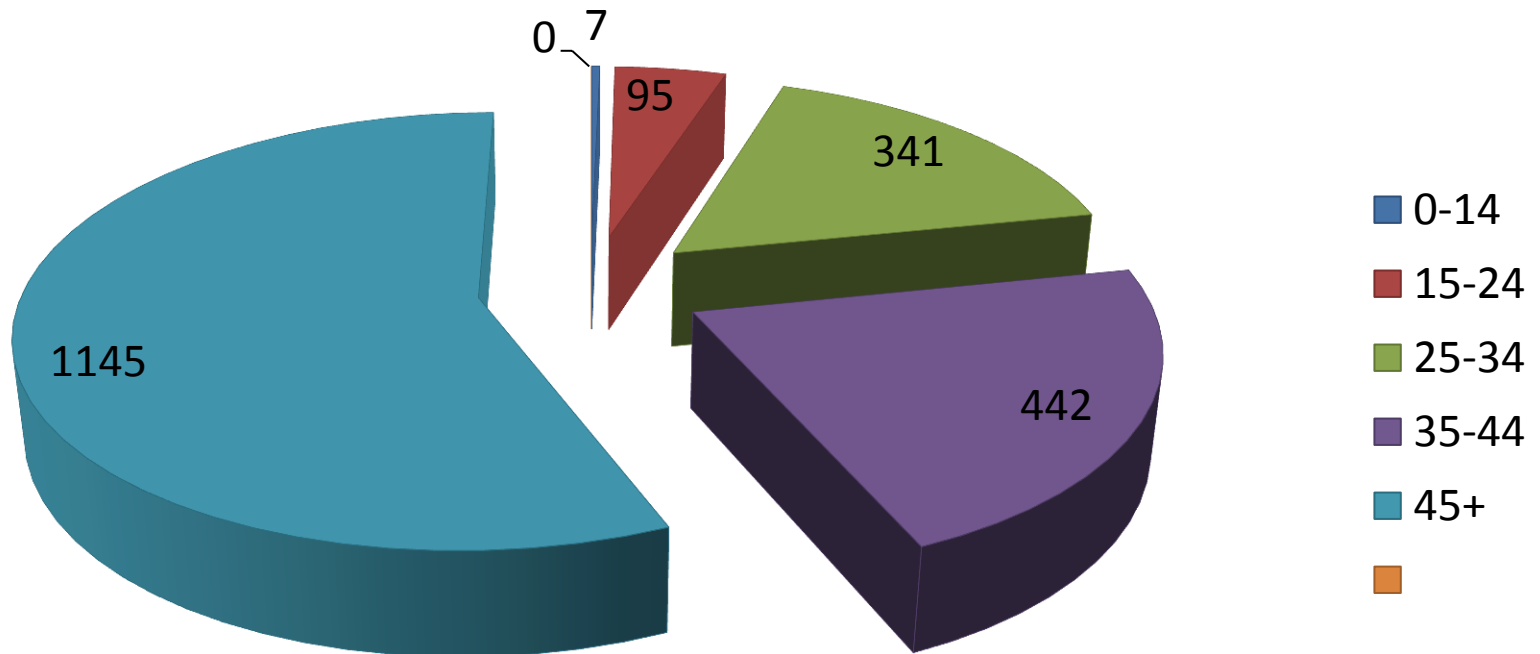
PLWHA by Gender, El Paso County 2014

2030 Persons Living with HIV 2014



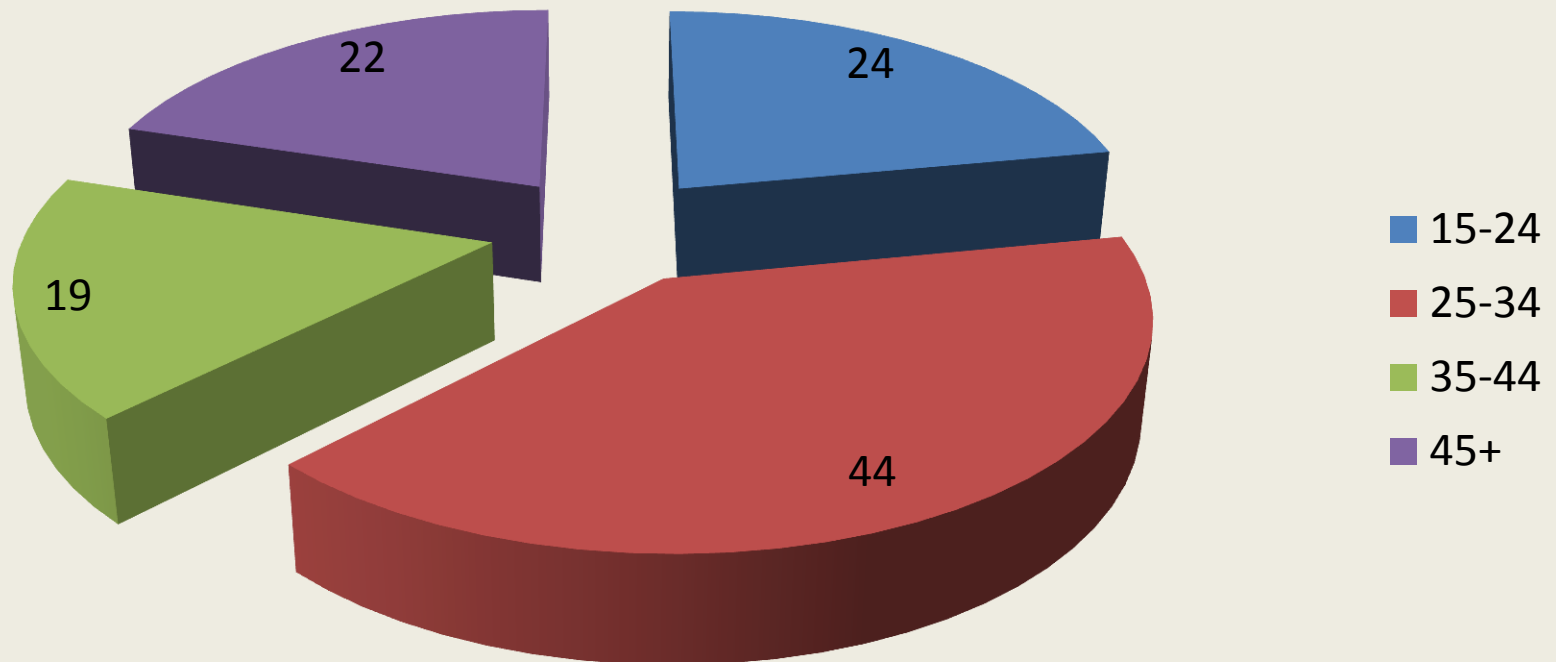
PLWHA by age group, El Paso County 2014

2030 Persons Living with HIV 2014



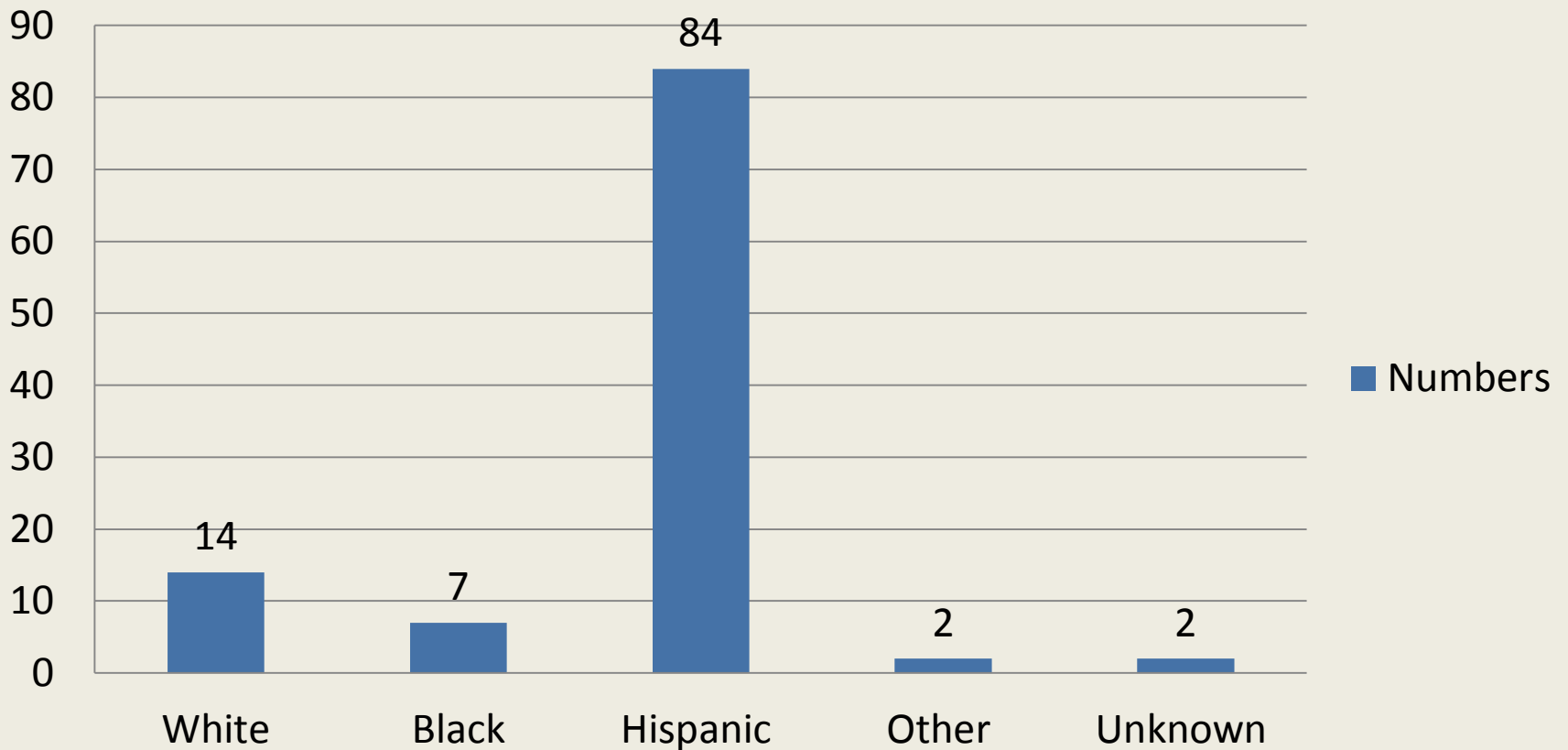
New HIV Diagnosis by age group, El Paso County 2014

Total number of New Diagnosis is 109

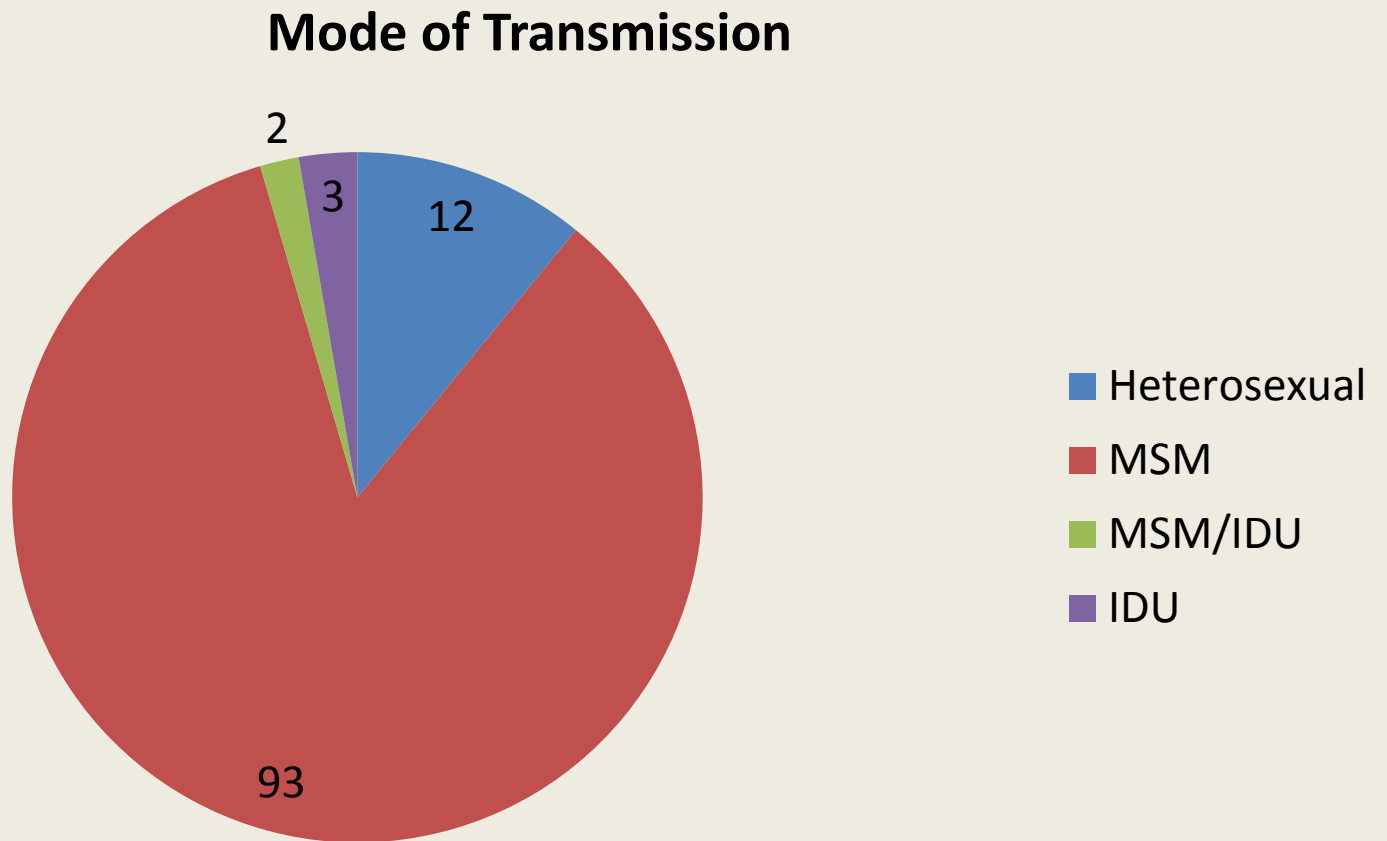


New HIV Diagnosis by Race/Ethnicity, El Paso County 2014

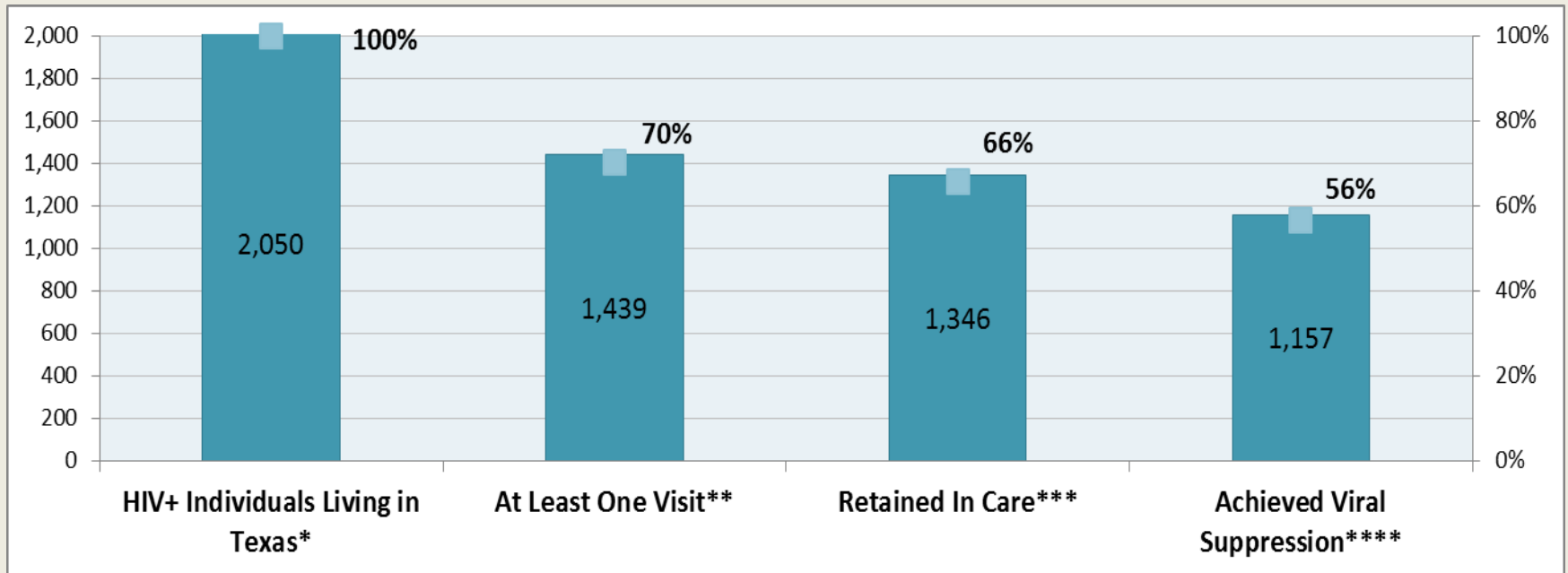
109 Newly Diagnosis Counts in El Paso County



New HIV Diagnoses by Transmission Category, El Paso County 2014



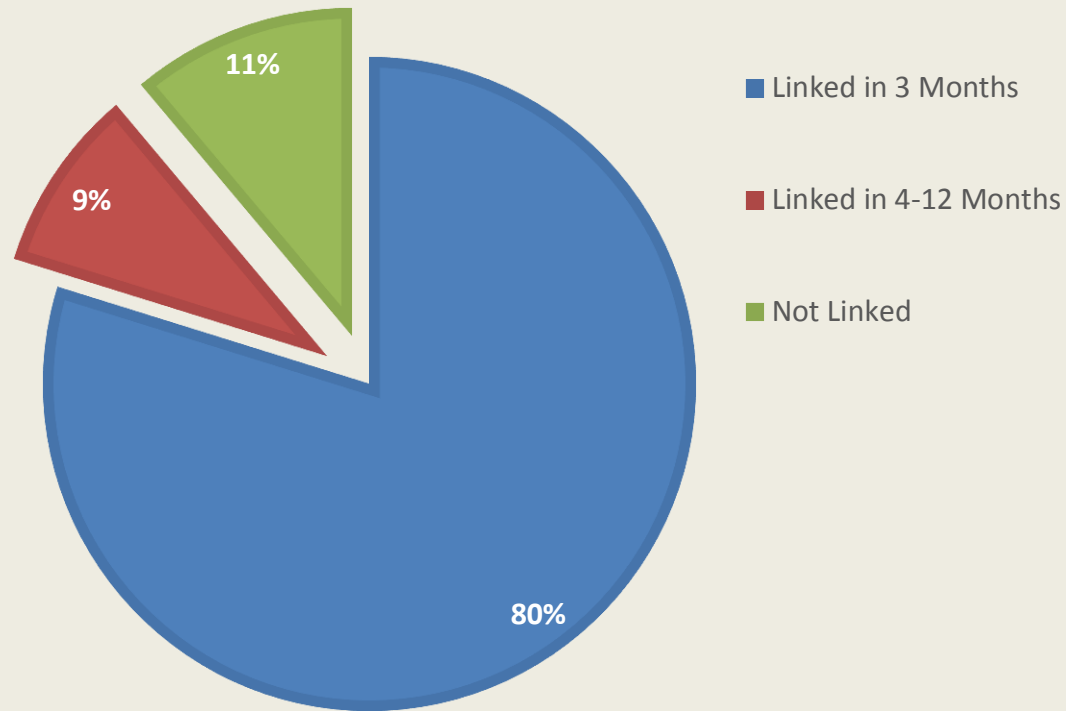
HIV Treatment Cascade for El Paso HSDA, 2014



Sources: Enhances HIV AIDS Reporting System as of July 2, 2015, Medicaid, ARIES, ADAP and Private providers

Time to Linkage to Care, El Paso County 2014

LINKAGE TO CARE, 2014



Sources: Enhances HIV AIDS Reporting System as of July 2, 2015, Medicaid, ARIES, ADAP and Private providers

Contact

Irene Ovalle-Valdez

222 S. Campbell

(915) 212-6603

www.elpasotexas.gov/public-health/programs/hiv-prevention



What is next

Testing

FREE HIV/Syphilis testing,

Confidential and Anonymous (only HIV)

M-Factor and CLEAR

222 S. Campbell, Suite 105

El Paso, TX 79901

(915) 212-6665



Questions



Works Cited

1. Texas HIV Surveillance Report, 2014 Annual Report,
www.dshs.state.tx.us/hivstd/reports/default.shtm
2. Center for Disease Control and Prevention: Lifetime Risk of HIV Diagnosis, Feb 23, 2016
www.cdc.gov/nchhstp/newsroom/2016/croi-press-release-risk.html